

# COLLAPSIBLE BUND

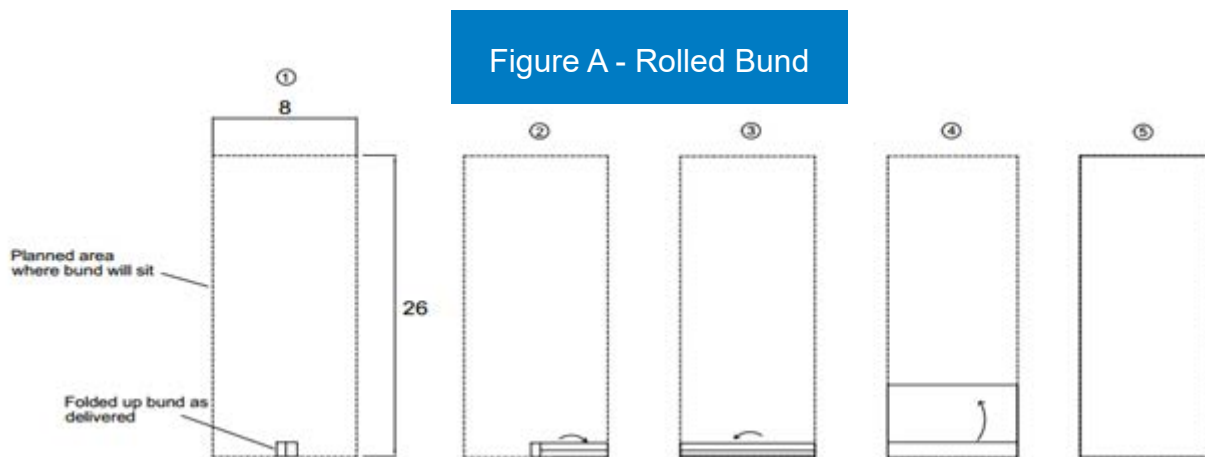
## INSTALLATION INSTRUCTIONS

### HANDLING INFORMATION

- Chatoyer's large Portable Containment Bunds (PCB) can weigh up to 700kg and must be handled with care to avoid serious injury and damage to the product.
- **DO NOT** grip or use legs to handle or move the PCB. It is recommended to leave legs flaked (folded) so you are not tempted to pull on the leg supports. Pulling on the leg supports will pull the leg out of the eyelet.
- Hold the wall with 2 hands and unfold two or three flaked/rolled sections at a time and move what you're comfortable with. For final adjustments grab between the supports on the wall.
- **DO NOT** Pull vigorously on the bund in an incorrect manner or with machinery. This can increase tension stresses throughout the bund which can cause damage to the product.

### BUND UNFOLDING GUIDE

PCBs up to 26 x 8m are rolled up. Anything larger is flaked up.



Place the folded and rolled Portable Containment Bund in the appropriate location as per Figure A for the rolled bund. The rolled bund should be placed with the top facing up (yellow legs showing). The rolled bund should be placed at the base or top of the planned area and unrolled the full 26 metres. Make sure it is facing in right direction.

#### Disclaimer

Chatoyer shall not be held liable for any damages whatsoever resulting from the use or installation of this product regardless of the cause, including but not limited to defect in material or workmanship, misuse or improper installation of product, accident regardless of cause or negligent or faulty design.

The owner hereby waives all liability claims against Chatoyer, its employees and directors, its partners and affiliates and its distributors and retailers except as specifically provisioned for in the form of a written product warrant, and then liability is limited only to the purchase price of the product excluding installation or any other costs or damages.



Spill Containment  
on Land



Spill Containment  
on Water



Liquid Containment



Stormwater  
Protection



Silt & Sediment  
Control



Bags & Covers



Water Diversion

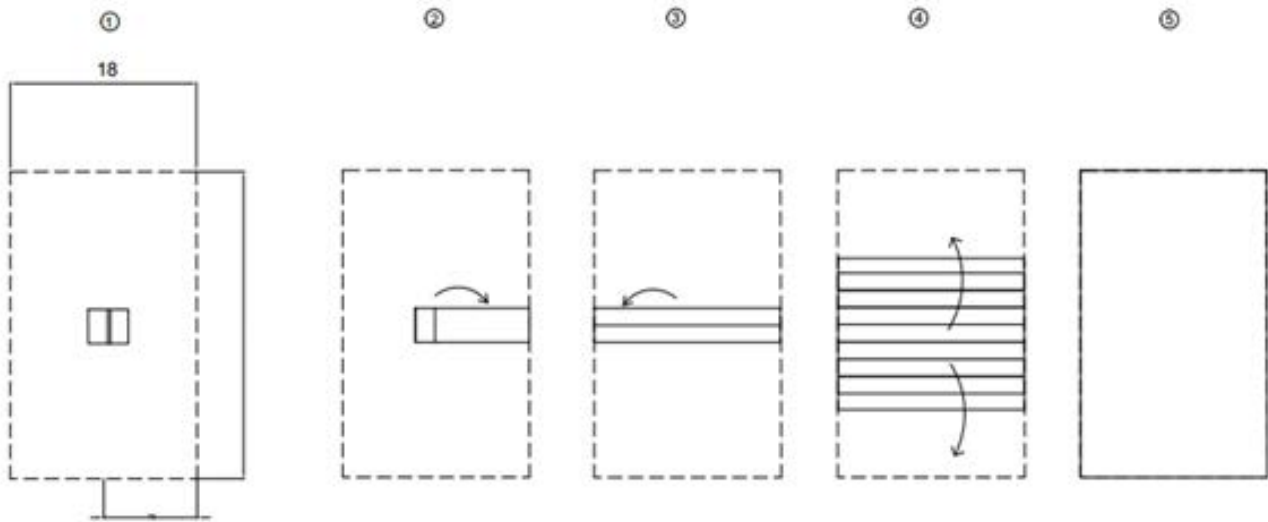


Spill Control

# COLLAPSIBLE BUND

## INSTALLATION INSTRUCTIONS

Figure B - Flaked Bund



Place folded and flaked Portable Containment Bund in the appropriate location as per Figure B for a flaked bund. The bund should be placed with the top facing up (yellow legs showing). Flaked bunds should be unflaked in a controlled manner in 5 metre sections. Make sure it is facing in right direction. Flaked bunds are started from the middle of the planned area.

### VIDEO GUIDE

Scan QR code to see tutorial



#### Disclaimer

Chatoyer shall not be held liable for any damages whatsoever resulting from the use or installation of this product regardless of the cause, including but not limited to defect in material or workmanship, misuse or improper installation of product, accident regardless of cause or negligent or faulty design.

The owner hereby waives all liability claims against Chatoyer, its employees and directors, its partners and affiliates and its distributors and retailers except as specifically provisioned for in the form of a written product warrant, and then liability is limited only to the purchase price of the product excluding installation or any other costs or damages.



Spill Containment  
on Land



Spill Containment  
on Water



Liquid Containment



Stormwater  
Protection



Silt & Sediment  
Control



Bags & Covers



Water Diversion



Spill Control

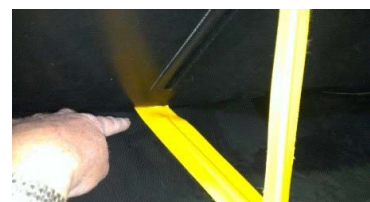
# COLLAPSIBLE BUND

## INSTALLATION INSTRUCTIONS

### WALL SET UP PROCEDURE

After laying out PCB in the required location:

1. Pull out the bottom material on the outside of the bund until it can lay flat on the ground around the outside of the PCB (the material is attached to the legs with eyelets).
2. Lift the PCB wall up slightly and push the small support leg in place to lay flat on the unfolded flap underneath the bund as shown.
3. Repeat for all Bund legs as per photos. Where necessary, lay ballast over the horizontal flaps to prevent wind from lifting them up.



#### Disclaimer

Chatoyer shall not be held liable for any damages whatsoever resulting from the use or installation of this product regardless of the cause, including but not limited to defect in material or workmanship, misuse or improper installation of product, accident regardless of cause or negligent or faulty design.

The owner hereby waives all liability claims against Chatoyer, its employees and directors, its partners and affiliates and its distributors and retailers except as specifically provisioned for in the form of a written product warrant, and then liability is limited only to the purchase price of the product excluding installation or any other costs or damages.



Spill Containment  
on Land



Spill Containment  
on Water



Liquid Containment



Stormwater  
Protection



Silt & Sediment  
Control



Bags & Covers



Water Diversion



Spill Control